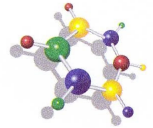




www.roadcoat.com



DEVELOPMENT



PRODUCTION



SPECIFICATION



INSTALLATION

ROADCOAT GmbH
EN ISO 9001

ROADCOAT-300

EPOXY RESIN CONCRETE REPAIR MORTAR

After over 10 years of practical and successful use, **RC-300** EPOXY RESIN REPAIR MORTAR was tested in 1982 to the German Norm MIB, Part 1: Repairs to Concrete Surfaces and Damaged Joint Edges. It was, at that time, the only material tested to fulfil the requirements as a coating at 2 & 6 mm as well as a repair mortar for use on weathered concrete surfaces. As a result of these tests, **ROADCOAT-300** was used for major repairs to the broken-off joint edges on the runways at Frankfurt Airport as well as on NATO airfields, roads and bridges. This mortar has been the standard material used by ROADCOAT for concrete repairs, particularly for car parking structures, for over 30 years.

New Build

- Replacing defective concrete
- Levelling uneven surfaces of concrete
- Infilling of holes, scratches, mechanical damage, etc
- Fillets, pedestrian ramps, level changes,
- Re-instating or creating new joint edges.
- Removing or reducing the size of puddles

Repairs

- Replacing removed defective concrete using RC-300 epoxy resin as corrosion protection on the grit-blasted reinforcing steel.
- Replacing other defective concrete
- Re-instating joint edges
- Removal of puddles
- Re-instating large area surface evenness/levels.
- Fillets, level changes such as pedestrian ramps.

Stressing

Freeze/thaw cycling -15C/+60C in saltwater

Adhesion

After stressing 2.0 N/mm²

Compressive Strength

After stressing 52 N/mm²

Tensile/Bending

After stressing 25 N/mm²

ROADCOAT (UK) Limited enquiries@roadcoat.com www.roadcoat.com