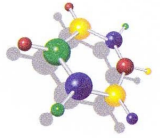




www.roadcoat.com



DEVELOPMENT



PRODUCTION



SPECIFICATION



INSTALLATION

ROADCOAT GmbH
EN ISO 9001

ROADCOAT **G3 OS-11** **ENHANCED CRACK BRIDGING - ECB** **PARKDECK WATERPROOF DRIVING SURFACE**

TECHNICAL DATA – FULL SYSTEM APPLIED TO CONCRETE

STATIC AND DYNAMIC CRACK BRIDGING

ACCELERATED 20 YEARS WEATHERING

FREEZE-THAW WITH DE-ICING SALTS

The standard **G3 OS-11** system will bridge existing cracks and cracks occurring after application as well as their dynamic movements due to traffic loading and temperature changes on structures designed, executed and performing to BS 8110.

For concrete surfaces with expected, potential or existing cracks which exceed the BS EN1504-2 Crack Bridging Class B 4.2., the **ENHANCED CRACK BRIDGING (ECB)** version can be installed **full surface or as bands**.

The Dynamic Crack Bridging ability as tested below to BS EN 1504-2 is 2.5 x the BS 8110 max. 0.4 mm design crack movement.

BS EN 1504-2: Products and Systems for the Protection and Repair of Concrete Structures — Definitions, requirements, quality control and evaluation of conformity

Part 2: Surface protection systems for concrete

Tests to BS EN 1504-2

“the basic requirement, the relevant performance characteristics of a crack bridging coating for exposed surfaces mechanically and low chemically loaded with de-icing salt influence.”

G3 OS-11 ECB total system thickness: 4.5 mm

Crack Bridging EN 1062-7 Method B

Dynamic Crack Bridging: 1.00 mm movement at -20 C°

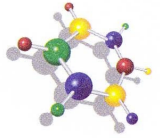
- ageing 7 days at 70 C° before testing
- sudden static crack of 1.20 mm induced at – 20 C°
- 1000 cycles from 0.70 mm to 1.20 mm = ± 0.50 mm at 0.03Hz
- 20,000 cycles vertical ±0.05 sinus at 1Hz.

There were no cracks in the G3-OS11 ECB after these tests.

ROADCOAT (UK) Limited enquiries@roadcoat.com www.roadcoat.com



www.roadcoat.com



DEVELOPMENT



PRODUCTION



SPECIFICATION



INSTALLATION

ROADCOAT GmbH
EN ISO 9001

ROADCOAT **G3 OS-11** **ENHANCED CRACK BRIDGING - ECB** **PARKDECK WATERPROOF DRIVING SURFACE**

TECHNICAL DATA – FULL SYSTEM APPLIED TO CONCRETE

Weathering/UV

Accelerated 20 years simulated weathering 2525 hours to DIN 5323D1.

No negative visible effects or adhesion loss.

Adhesion To Concrete after weathering

The application was done at 8°C with 85%RH. After 50 cycles heat/freeze-thaw with de-icing salt influence:

Adhesion after freeze/thaw	required	< 0.8N/mm ²
	test result	1.6N/mm ²

Slip/Skid resistance

Slip value wet SRT	required	> 55
	test result	> 70

Classification BS EN 1504-2 : Class III

Water-Vapour Transmission Rate -Permeability

Mean Diffusion-Equivalent Air Layer (Sd)	required	< 5.00 m
	test results	2.71 m

Classification EN 1504-2: Permeable to water vapour

Liquid Water Transmission Rate -Permeability

Mean Coefficient of liquid-Water Transmission rate(w)	required	< 0.10 kg/m ² .hr ^{0.5}
	test results	0.05 kg/m ² .hr ^{0.5}

Classification EN 1504-2 : Impermeable to liquid water

Copies of Tests available upon request.

ROADCOAT (UK) Limited enquiries@roadcoat.com www.roadcoat.com