



# Car Park Deck Waterproofing Car Park Deck Protective Coatings

HOME

Contact us

## Car Park Deck Systems

- » Car Park Roof Decks
- » Car Park Interior Decks
- » Marking
- » Refurbishment

**R & D, Material Manufacture and Installation – all in one Hand !**

**BS EN 1504 Part 2: Surface Protection Systems for concrete**

Table B.1 Examples 2 & 3 give "the basic requirements that designers need to specify, depending upon the structural analysis", for „interior” and „exposed surfaces” such as Car Park Decks.

ROADCOAT systems **CENTRO** and **G3 OS-11** fulfill and exceeds the maximum requirements of **BS EN 1504-2** for Car Park Decks.

- 5,000,000 m<sup>2</sup> worldwide** – **850,000 m<sup>2</sup> in the UK**
- Largest project 260,000 m<sup>2</sup>** – **50 football pitches in 11 weeks**
- Largest UK project BAA T5** – **Heathrow MSCP 104,000 m<sup>2</sup>**

Mail to  
» [enquiries@roadcoat.com](mailto:enquiries@roadcoat.com)

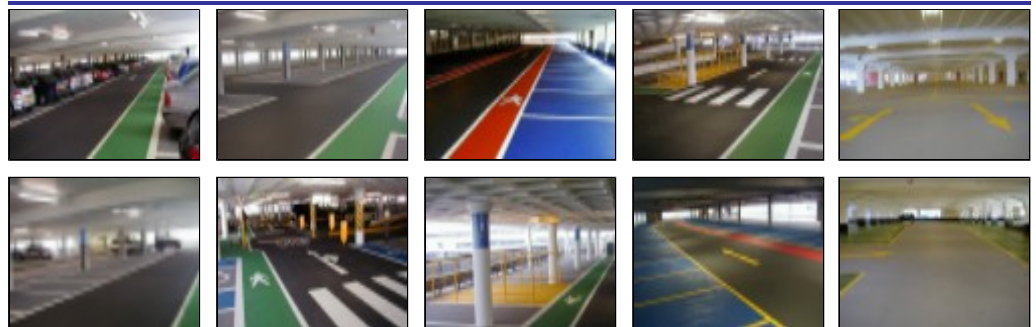
*Click a picture to view gallery*

## Car Park Roof Decks » *What you get*



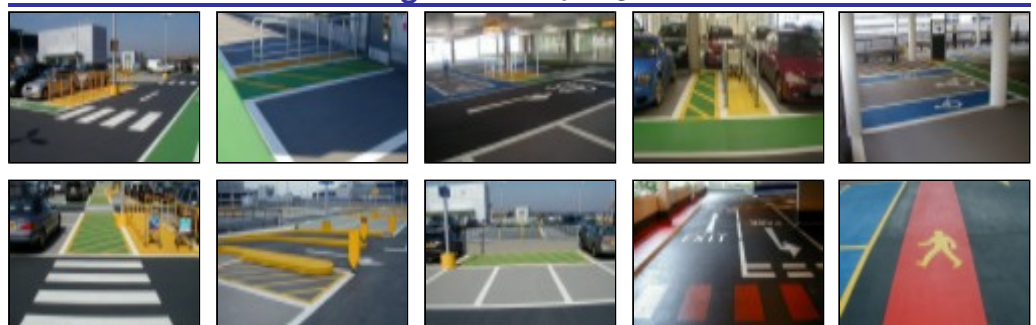
» **G3 OS-11** [Warranty](#) [Performance & Technical Data](#) [Details](#) [Cleaning & Maintenance](#)

## Car Park Interior Decks » *What you get*



» **CENTRO** [Warranty](#) [Performance & Technical Data](#) [Details](#) [Cleaning & Maintenance](#)

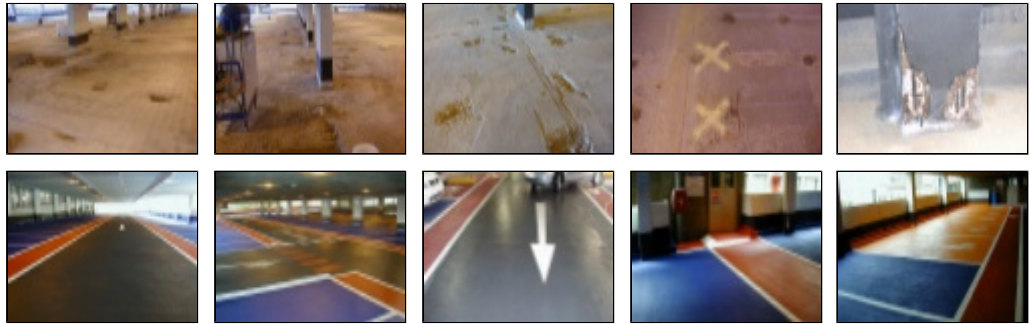
## Car Park Deck Marking » *What you get*



» ***More information***

## Car Park Deck Refurbishment

» ***What you get***



» ***More information***

[Printview \(PDF\)](#) | [HOME](#)



[www.roadcoat.com](http://www.roadcoat.com)

ROADCOAT (UK) Limited, Baxall Business Centre,  
Adswold Industrial Estate, Stockport, SK3 8LF, UK,  
Tel. 0044(0) 161-477783, [enquiries@roadcoat.com](mailto:enquiries@roadcoat.com)

ROADCOAT GmbH, Carl-Benz-Str. 14, D-35447 Reiskirchen  
Tel. 0049(0) 6408-504360, [enquiries@roadcoat.com](mailto:enquiries@roadcoat.com)